

# Lightning Ridge Trip Friday 20 May– Sunday 22 May



The People who went to Lightning ridge

At 6.30am Friday 20 May 2011 we were at The Northern Highlands Travel at Thornton to board the coach for Lightning Ridge for the opening of the Lightning ridge Men's Shed. Those who went and their shed Names are below:

## **Maitland Community Men's shed**

Jeff Dunn  
Perce and Jan Nash  
Anthony Kaspezak  
Mick O'Hearn  
Andrew and Beverly Warner  
Ian Goodman  
Garry and Sue Kirkman  
Donald Pinkerton  
John & Yvonne Hill  
Ted and Shirley Berridale  
Don & Maureen Ling  
Liz MacDonald  
Jerry Cassidy  
Barry and Margaret White  
Joan Welsh  
Graham Williams and John Cook  
Angus Jamieson Coach Driver

## **The Shed@ Windale**

Paul and Janice Battle  
Roger and Doreen Greenam  
Graeme and Eileen Hinkster  
Rob and Carol Lawrence  
Don and Maureen Spence  
Darrel Phillips

## **Hawkins Masonic Village Men's Shed**

Bob Hill

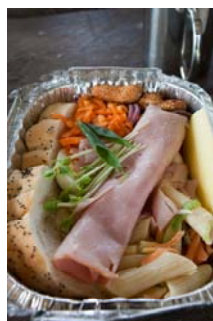
## **Wangi Wangi Men's Shed**

Arthur Fletcher  
David Stewart  
Marcus Horne

This was a Cluster event which caused a flood of publicity in the Lightning Ridge Flash so much so that the Lightning Ridge Men's Shed were so glad to see us on the Saturday for the opening.



Morning Tea at Merriwa Friday 20 May



Gilgandra Lunch



Walgett Afternoon Tea

This trip was funded by Catholic Care and each participant had to fund their evening meals and accommodation costs for two days



The Wallangulla Motel which we stayed in



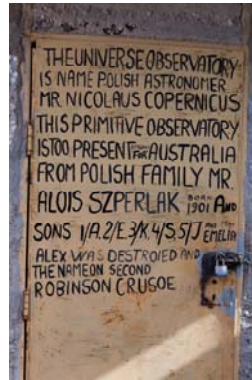
The Bowling Club across the road where we ate



A Street Sign



Graham Williams checks out a bike at the observatory



One of the many signs at the observatory



One of the out buildings at the observatory

On Saturday we were taken on a Guided tour of the opal fields of Lightning Ridge by Black Opal Tours and on this tour we were told that Lightning Ridge is a drinking Town with a Mining Problem



The tour guide on the coach



The tour guide showing how to polish opals



The tour guide with some rather large cactus

This trip on Saturday included a visit to Black Opal railway carriage display as well Bevan's Cactus World where we saw cactus in all sizes and shapes, this collection of Cactus is the largest private collection in the world.



Cactus from many parts of the world are here so are some very old cactus and some are not as they look very smooth and cuddly they are not

## Lightning Ridge Men's Shed Opening



This is Lightning Ridge Men's Shed in the industrial subdivision of Lightning Ridge, this building was the property of an Aboriginal Land Council who went "belly up".

Lightning Ridge Men's Shed pay rent on this building in the vicinity of \$150 plus gst and have the first years rent subsidised by Lightning Ridge City Council.

This shed is Aupiced by The Neighbourhood Council of Lightning ridge



Ted & Shirley Borradaile in front of LR shed



Chuck Peters addresses the crowd after stomping on his flash drive and deciding to wing his speech



A Didgeridoo was played



A cheque for \$2000 being presented to Chuck by the neighbourhood Centre Manager

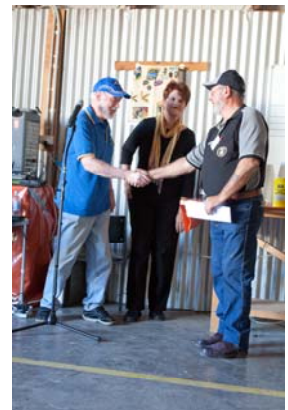
The Hunter Valley Cluster Group donated a wood lathe and a box of trinkets to the Lightning Ridge Men's Shed and Liz MacDonald collected cash to the value of \$180 after Bevan's Cactus World forgoe charging entry so Liz collected \$5 from each of us and presented this to Chuck. UHA made a cheque presentation to Chuck of \$1000.



Liz MacDonald addresses the crowd



Roger Greenam Hunter Valley Cluster Group addresses the crowd



Roger making the presentation to Lightning Ridge Men's Shed

Also attending the opening function was the Federal Member for Parkes Mr Mark Coulton and State Member for Barwon Mr Kevin Humphries.

During Mark Coulson speech he made reference to a Parliamentary Sub Committee of which he heads is looking at Tenure of Men's Sheds across Australia which means that sheds like Lightning Ridge and others will not pay rent for the buildings that they occupy. Mark Coulson and Kevin Humphries are strong advocates of Men's Shed's.

Some people say it was worth the effort to go to Lightning Ridge just to hear this statement



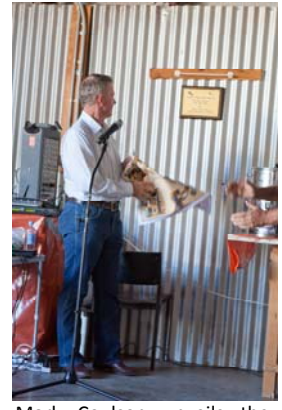
Liz gets a kiss from Chuck



Mr Kevin Humphries addresses the crowd



Mark Coulson addresses the crowd



Mark Coulson unveils the opening plaque

We enjoyed a very nice meal at the Lightning Ridge Shed which had approximately 200 people in attendance. As well we met some of their shedders which ranged in age from early 70 to 89 for an old blacksmith who is going to show some younger shedders how to do old fashioned blacksmithing, now is this not what a Men's Shed is all about



The crowd at the opening



The food is being prepared



Another shot of the food

Another great thing about visiting other sheds is that they can show another way of storing items that you probably have not thought of and Lightning Ridge is no exception to this



Storing push bikes with wall hangers that LR made



This is how LR store their softwood, Hardwood attracts white ants.



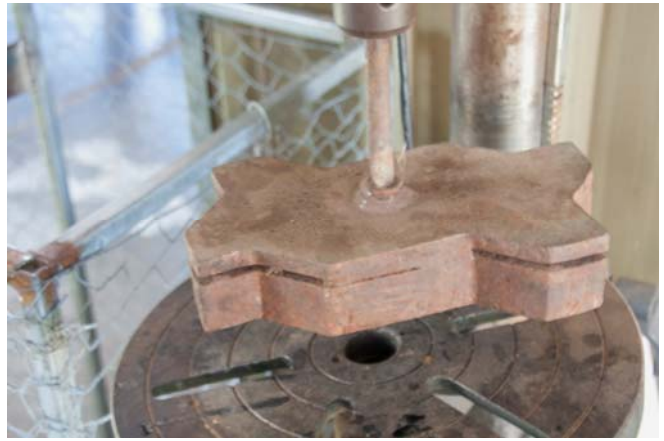
This is peddle power in action imagine taking Mum and the kids for a Sunday picnic this way?



Imagine a Steamfest Engine face in April 2012



Waiting for the next Passenger.



Lightning Ridge Men's Shed has two original pieces of equipment two can crushers these can crushers have crushed thousand of empty drink cans and the proceeds of the sale of these cans has helped the Local Hospital

We left the Lightning Ridge Men's Shed around 4pm back to the motel and some went to The Lightning Ridge Hot Springs, this is used for therapeutic reasons.



Perce Nash was reported to say that he was going to throw his walking stick away after being here—asked after why this did not happen he said he threw his stick away for a short time.

After the Hot Springs we had the pleasure of having Chuck Peters and some of his shedders join us for a meal and drink or two or three at the bowling club, this was a most enjoyable time and we found out a few more details on Chuck, He works as a Tour Guide for Black Opal Tours and doctor Mick found a thicknesser at the shed that was in a state of disrepair and the MCMS doctor offered to fix this for them and at last sighting of Chuck he was going to have this thicknesser on the bus at 6 am the next day, so when we rose the next morning there was no sign of Chuck or the thicknesser, maybe Chuck will bring this down one day.

We had such a good time with the Chuck and his team at Lightning Ridge Men's Shed that it was sad to say Goodbye but we are sure that it will not be too long before we catch up with them again.



This is a novel way of collecting surplus coins



Roger Greenam addresses the dinner crowd.



Liz MacDonald addresses the dinner crowd

We left Lightning Ridge around 7am on Sunday 22 May 2011 since the coach driver had log book implications and had to be back at Thornton by 6pm. Liz had told us that it would be very cool at Lightning ridge and to pack some warm clothing some of us were wondering where the cool weather was it must have left Lightning Ridge when it got wind that we were coming up.



The main street of Lightning Ridge 6.45am Sunday 22 May 2011 looking west.



The main street of Lightning Ridge 6.45 am 22 May 2011 looking east.



A more modern building in the main street



A view of the country from the coach



Angus is assisted with the morning tea setup at Wee Waa, this coach has everything Urn , fridge two tables etc.



Angus ran out of Milk at Wee Waa so Donald Pinkerton volunteered to go to IDA to get the milk here he is returning



Angus was faced with 5 Wheat harvesters to pass coming back.



A view of the highway at Gunnedah



Crofts Pie Shop at Aberdeen



We arrived at Northern Highlands Travel at around 5.30pm which fitted Angus's log book implications and Donald was kept busy.

This was a fantastic trip to Lightning Ridge for the opening of their Men's Shed and everyone enjoyed the stay, what we liked about this strip was the co-operation from everyone we met from the motel staff, the bowling club staff the coach driver and the Men's shedders at lightning Ridge we could not say we did not enjoy the stay quite the opposite.

But a very special thank you must go to Liz MacDonald for all the arrangements that she made with many calls to the Wallangulla Motel and everyone that went was kept up to speed with the arrangements.

Liz finishes with Catholic Care at the end of June 2011 but I hope that we do not see the end of this very talented lady, it is felt that Liz will be around in some form in the future, we wish Liz good health and a very prosperous retirement from Catholic Care.

To all of you who accompanied us to Lightning Ridge thank you for your hospitality, good wishes and company and most of all no accidents so many thanks for that.

To Chuck Peters we had a great time in your area you have a wonderful team and a great location and a great vision for this shed if you need any help we are just a phone or email call away so have no hesitation in calling us even if it is only to say "Goo day"